

Please check the examination details below before entering your candidate information

Candidate surname

Other names

Centre Number

Candidate Number

## Pearson Edexcel Award

Time 1 hour

Paper  
reference

**ANM20/2A**

### Number and Measure

Level 2

Section A (Calculator)

**You must have:**

Ruler graduated in centimetres and millimetres, protractor, pen, HB pencil, eraser, calculator.

Total Marks

### Instructions

- Use **black** ink or ball-point pen.
- **Fill in the boxes** at the top of this page with your name, centre number and candidate number.
- Answer **all** questions.
- Answer the questions in the spaces provided  
– *there may be more space than you need.*
- **Calculators may be used.**
- If your calculator does not have a  $\pi$  button, take the value of  $\pi$  to be 3.142 unless the question instructs otherwise.



### Information

- The total mark for this section is 50
- The marks for **each** question are shown in brackets  
– *use this as a guide as to how much time to spend on each question.*

### Advice

- Read each question carefully before you start to answer it.
- Try to answer every question.
- Check your answers if you have time at the end.

Turn over ►

R66141RA

©2022 Pearson Education Ltd.

L:1/1/1/1/1/



Pearson

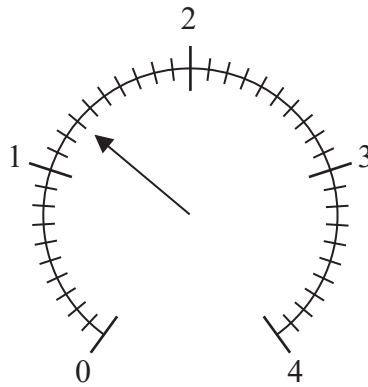
Section A

Answer ALL questions.

Write your answers in the spaces provided.

You must write down all the stages in your working.

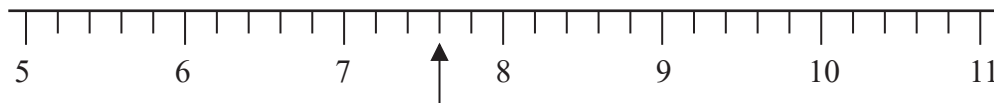
1 (a)



Write down the number marked with the arrow.

(1)

(b)



Write down the number marked with the arrow.

(1)

(Total for Question 1 is 2 marks)

2 Work out  $18.5 \times 8.72$

(Total for Question 2 is 1 mark)

3 (a) Work out  $-2 \times +3$

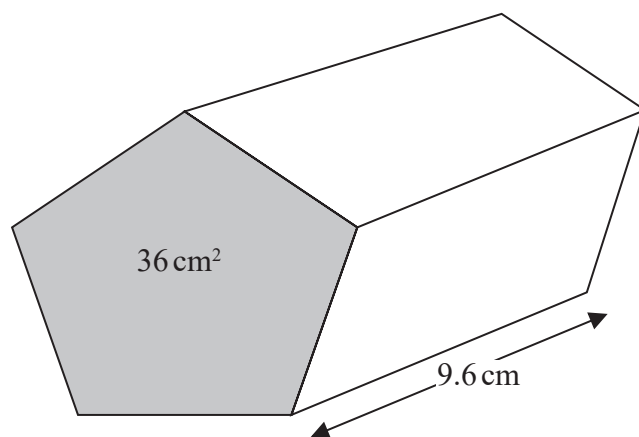
.....  
(1)

(b) Work out  $5 - -9$

.....  
(1)

(Total for Question 3 is 2 marks)

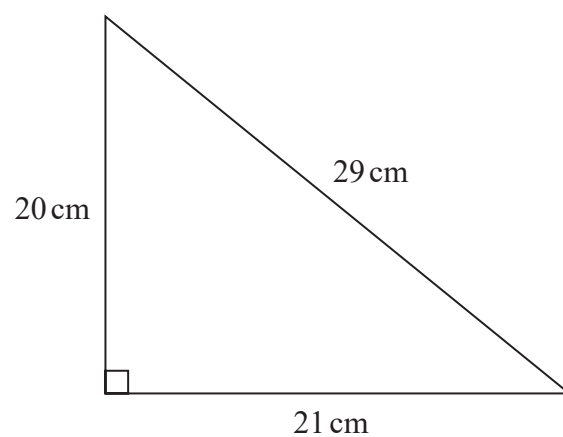
4 Find the volume of this prism.



.....  $\text{cm}^3$

(Total for Question 4 is 2 marks)

5 Here is a triangle.



(a) Work out the perimeter of the triangle.

..... cm  
(2)

(b) Work out the area of the triangle.

..... cm<sup>2</sup>  
(2)

(Total for Question 5 is 4 marks)

DO NOT WRITE IN THIS AREA

DO NOT WRITE IN THIS AREA

DO NOT WRITE IN THIS AREA

DO NOT WRITE IN THIS AREA

DO NOT WRITE IN THIS AREA

DO NOT WRITE IN THIS AREA

6 Work out 16% of 300

.....

(Total for Question 6 is 2 marks)

7 Change £240 into dollars (\$) using an exchange rate of £1 = \$1.20

\$.....

(Total for Question 7 is 2 marks)

8 (a) Find the value of  $\sqrt{841}$

.....

(1)

(b) Find the value of  $17^3$

.....

(1)

(c) Work out the value of  $5^3 \times 2^4$

.....

(2)

(Total for Question 8 is 4 marks)

- 9 Derek invests £5000 for 3 years in an account paying simple interest at a rate of 2.5% per year.

Work out the total amount of simple interest paid to Derek by the end of the 3 years.

£.....

(Total for Question 9 is 3 marks)

- 10 Change 180 litres into gallons.  
(1 gallon = 4.5 litres)

..... gallons

(Total for Question 10 is 2 marks)

- 11 Work out  $8\frac{1}{10} \div 2\frac{1}{4}$

.....

(Total for Question 11 is 2 marks)

DO NOT WRITE IN THIS AREA

DO NOT WRITE IN THIS AREA

DO NOT WRITE IN THIS AREA

DO NOT WRITE IN THIS AREA

DO NOT WRITE IN THIS AREA

DO NOT WRITE IN THIS AREA



- 12 Last week Rayheem worked for 36 hours at £11.50 per hour.  
He also worked 15 hours overtime at £20.20 per hour.

His deductions were

Income Tax	£143.30
National Insurance	£43.02

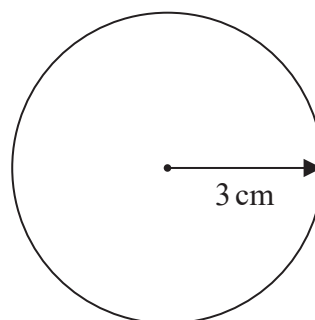
Work out how much Rayheem got paid last week after these deductions.

£.....

(Total for Question 12 is 4 marks)

- 13 A circle has a radius of 3 cm.

Work out the circumference of the circle.



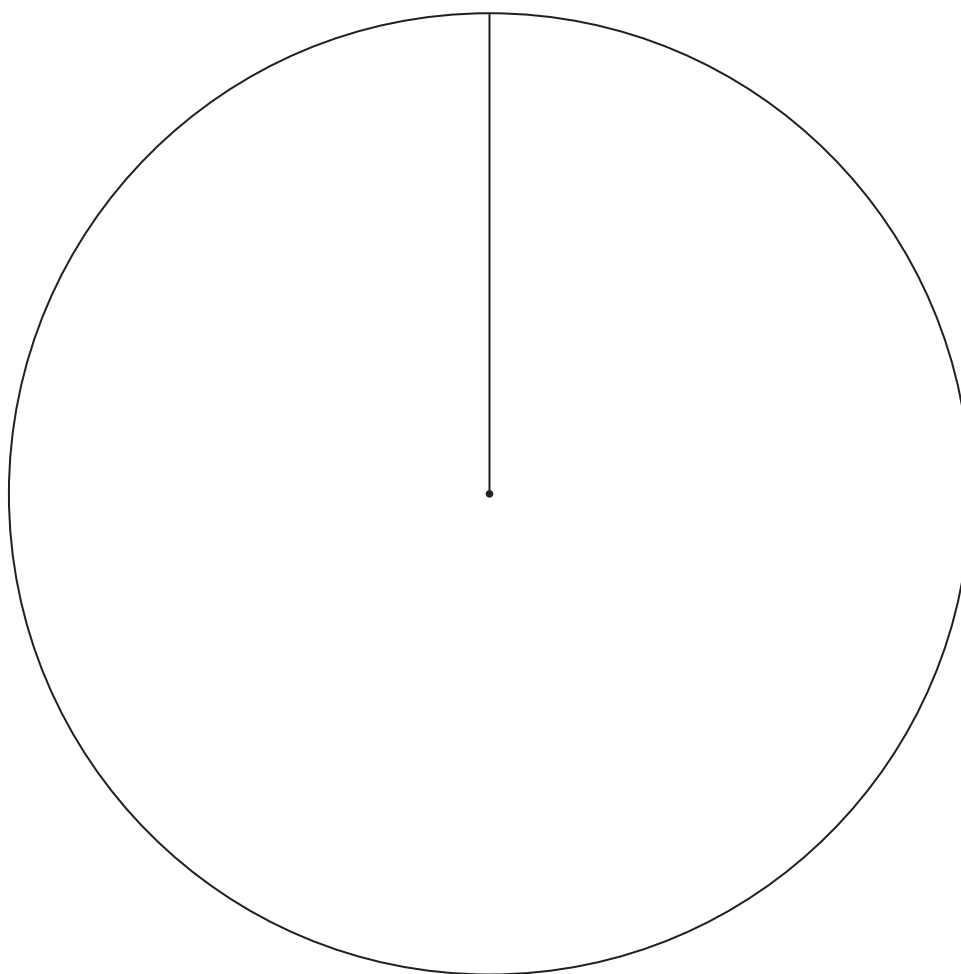
..... cm

(Total for Question 13 is 3 marks)

14 The table gives the numbers of men, women and children that are on a train.

Men	700
Women	800
Children	300

Draw a pie chart for this information.



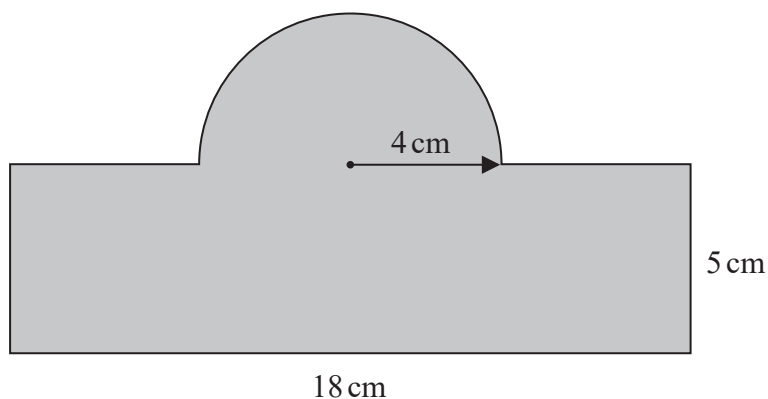
(Total for Question 14 is 4 marks)



15 Find the Highest Common Factor (HCF) of 48 and 80

(Total for Question 15 is 3 marks)

16 This shaded shape is made from a rectangle and a semicircle.



The rectangle has a length of 18 cm and a width of 5 cm.  
The semicircle has a radius of 4 cm.

Work out the area of the shaded shape.

..... cm<sup>2</sup>

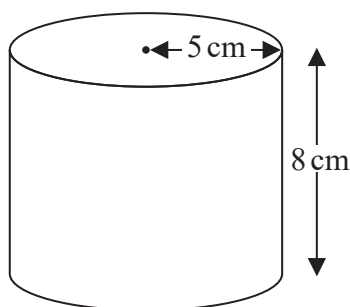
(Total for Question 16 is 4 marks)

- 17 In January 1990, a standard Edex chocolate bar had a weight of 65 g.  
In January 2020, a standard Edex chocolate bar had a weight of 50.7 g.  
Work out the loss in weight as a percentage of the January 1990 weight.

..... %

(Total for Question 17 is 3 marks)

- 18 Here is a cylinder.



The height of the cylinder is 8 cm.  
The radius of the cylinder is 5 cm.

Work out the volume of the cylinder.

..... cm<sup>3</sup>

(Total for Question 18 is 3 marks)

**TOTAL FOR SECTION A IS 50 MARKS**



DO NOT WRITE IN THIS AREA

DO NOT WRITE IN THIS AREA

DO NOT WRITE IN THIS AREA

DO NOT WRITE IN THIS AREA

DO NOT WRITE IN THIS AREA

DO NOT WRITE IN THIS AREA

BLANK PAGE

DO NOT WRITE IN THIS AREA

DO NOT WRITE IN THIS AREA

DO NOT WRITE IN THIS AREA

BLANK PAGE